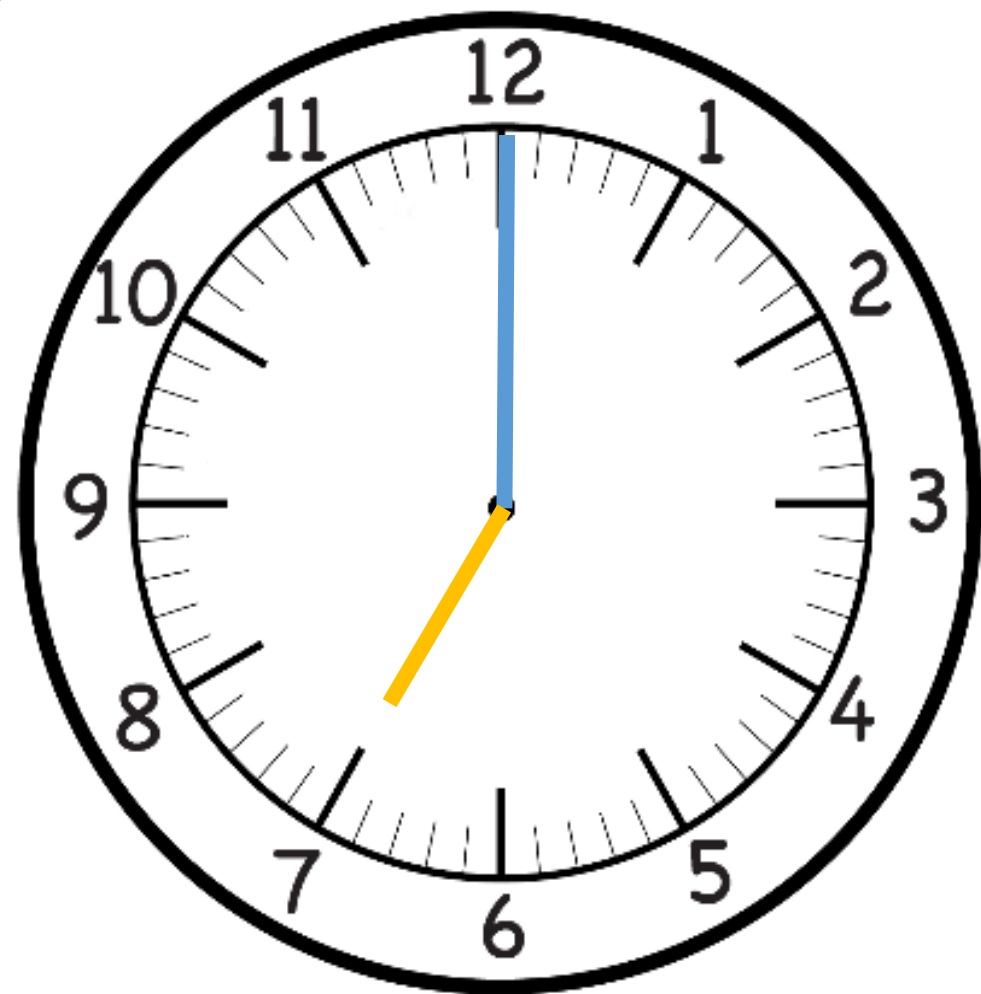


L'orologio analogico non ci dice se è giorno o se è notte.

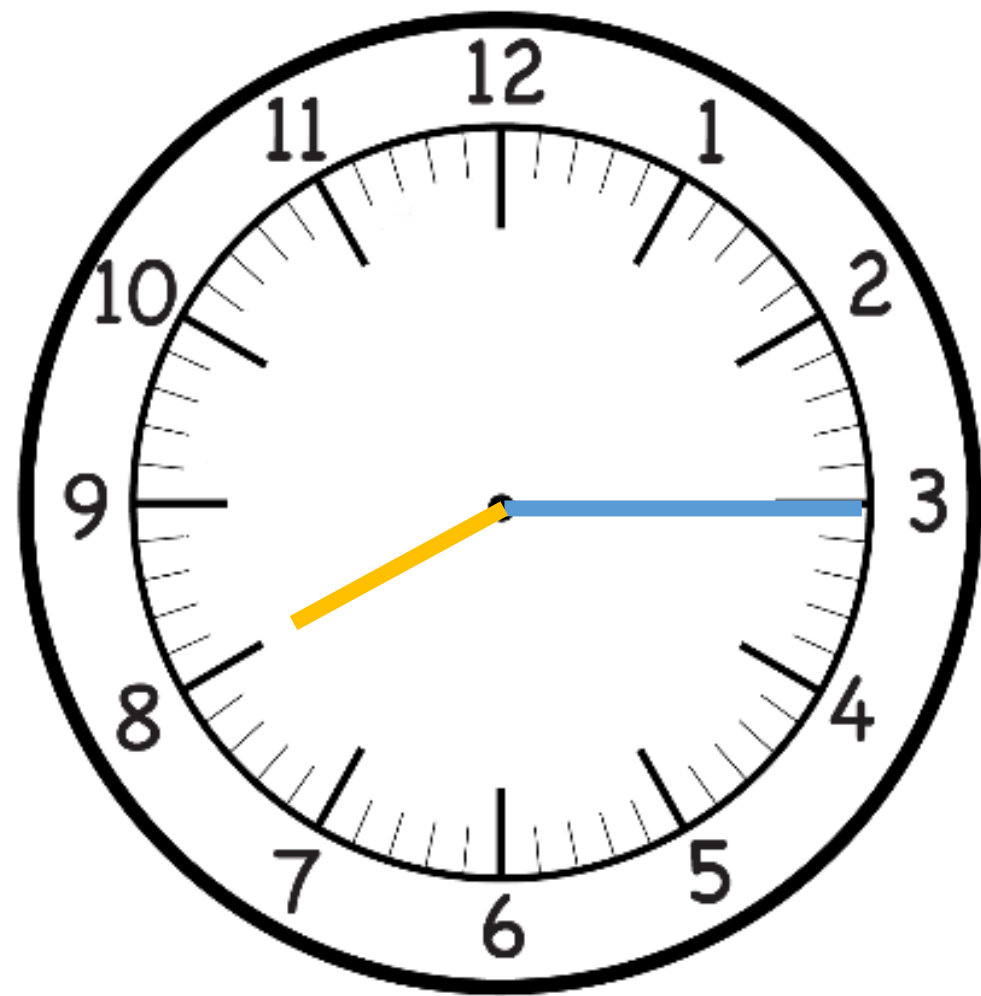
Per distinguere le ore che vengono prima di mezzogiorno (antimeridiane) da quelle che vengono dopo mezzogiorno (pomeridiane) si usano numeri diversi.

Partiamo dal **mattino.**

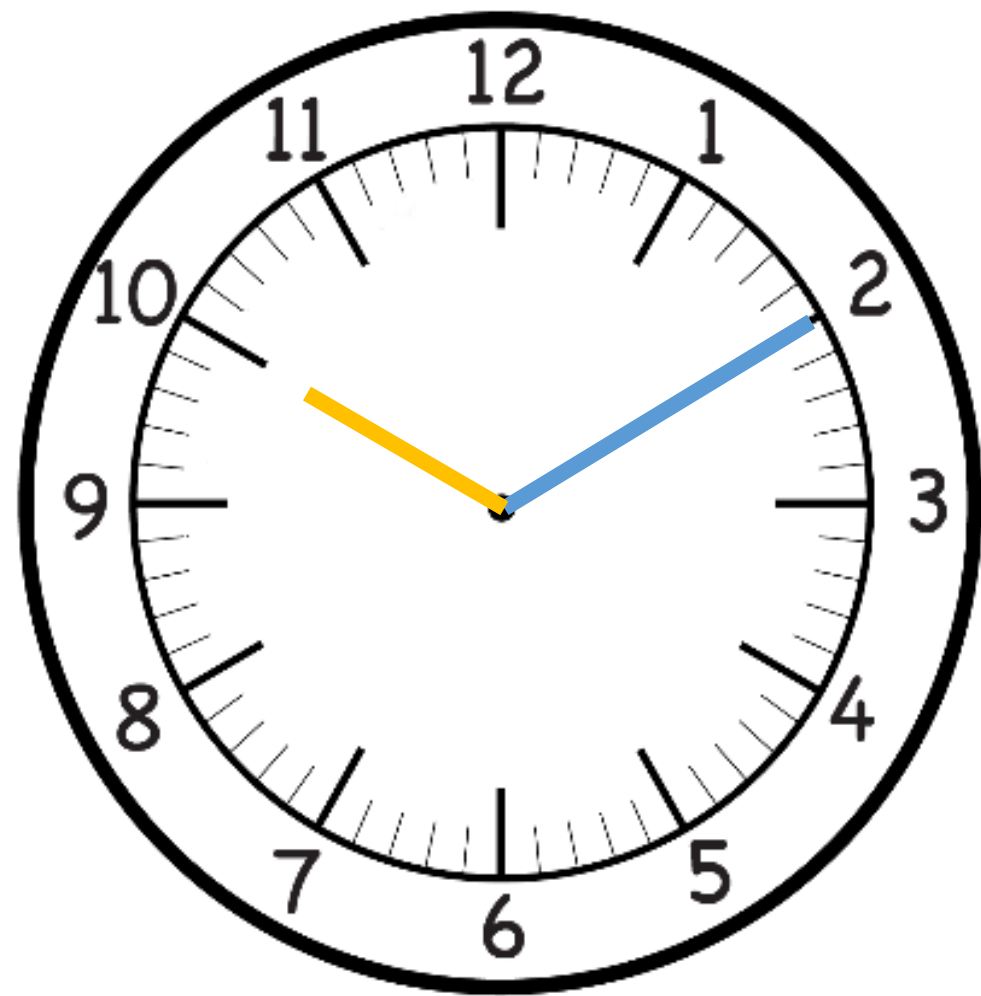
Ci svegliamo circa alle **7 e l'orologio segna così:**



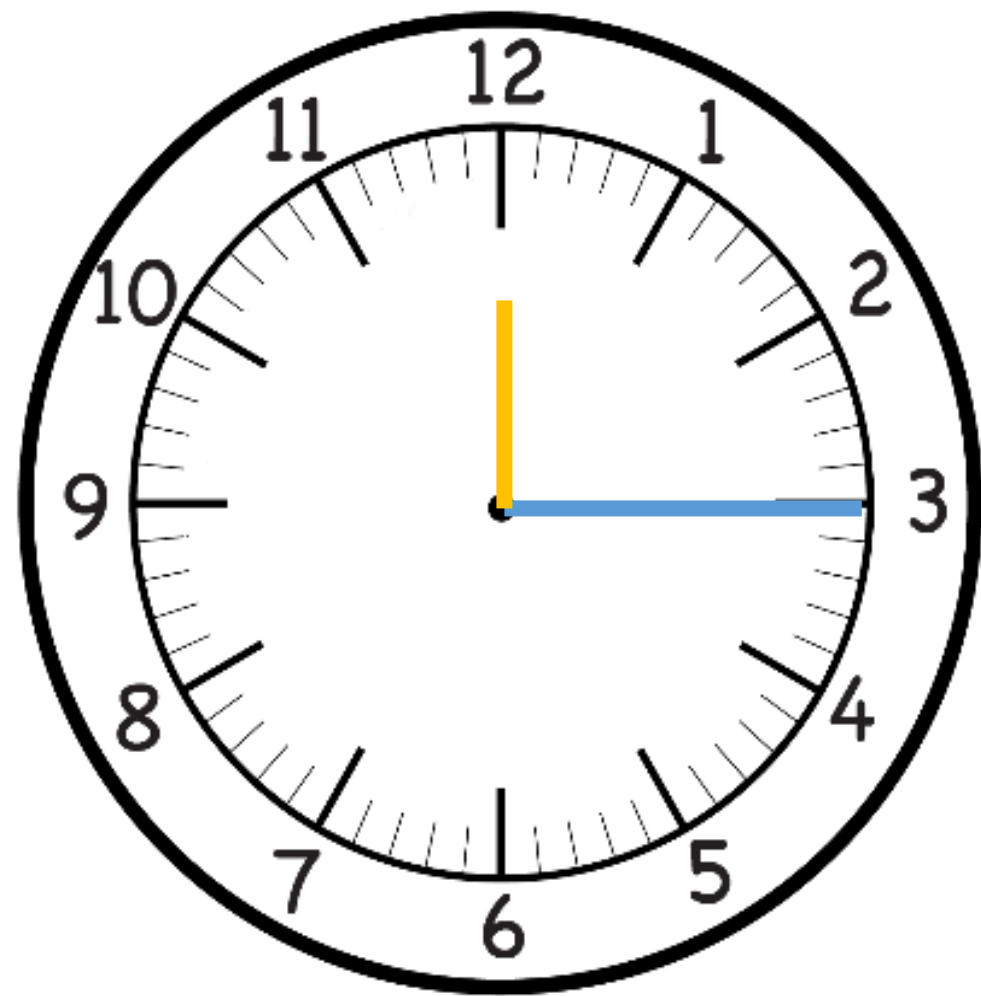
Alle 8 e un quarto si entra a scuola:



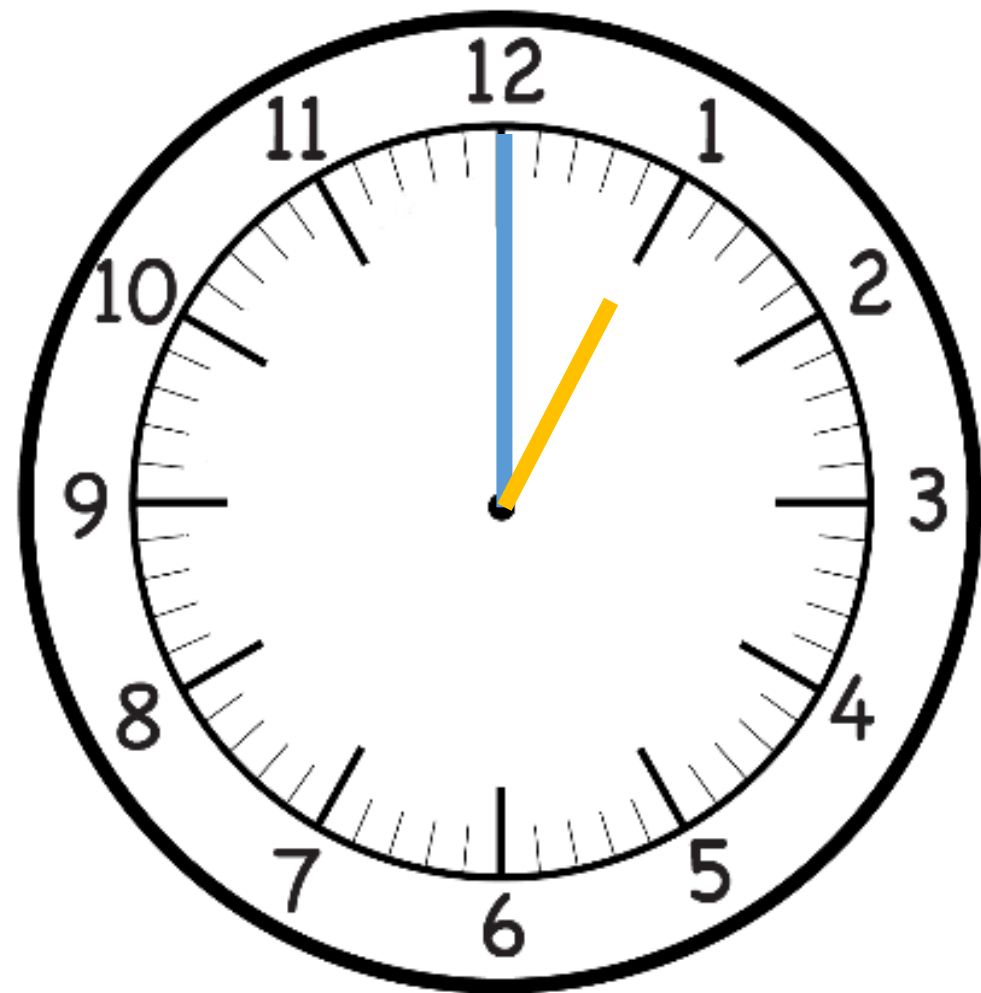
Alle **10.10** c'è la ricreazione:

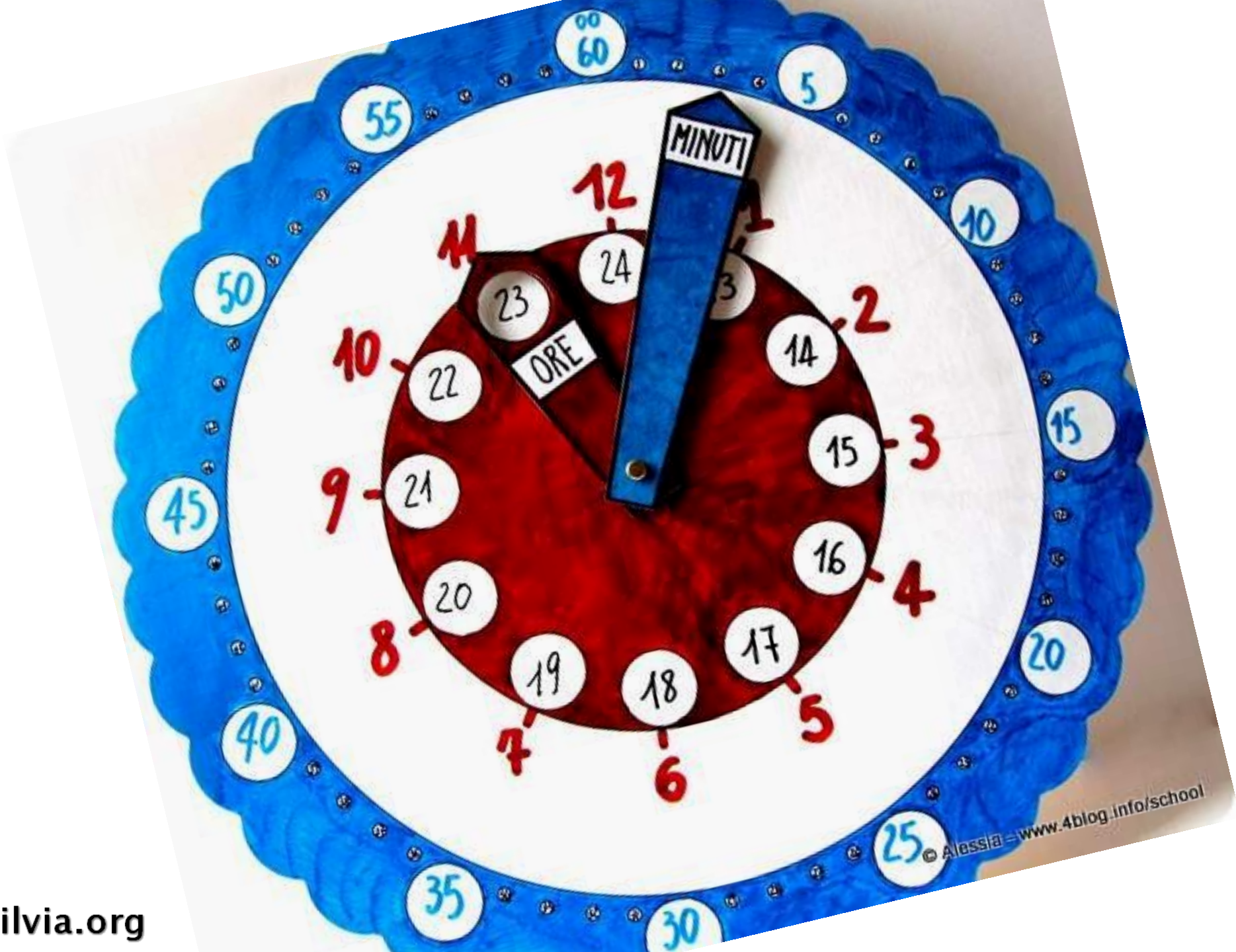


Alle 12 e un quarto si torna a casa:



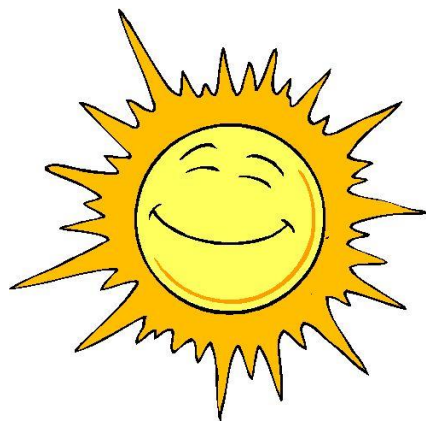
**Dopo le 12 ci sarebbe l'una,
ma...per indicare l'una dopo
mezzogiorno si dice: le 13**
(proprio perché si va avanti con
la numerazione)!



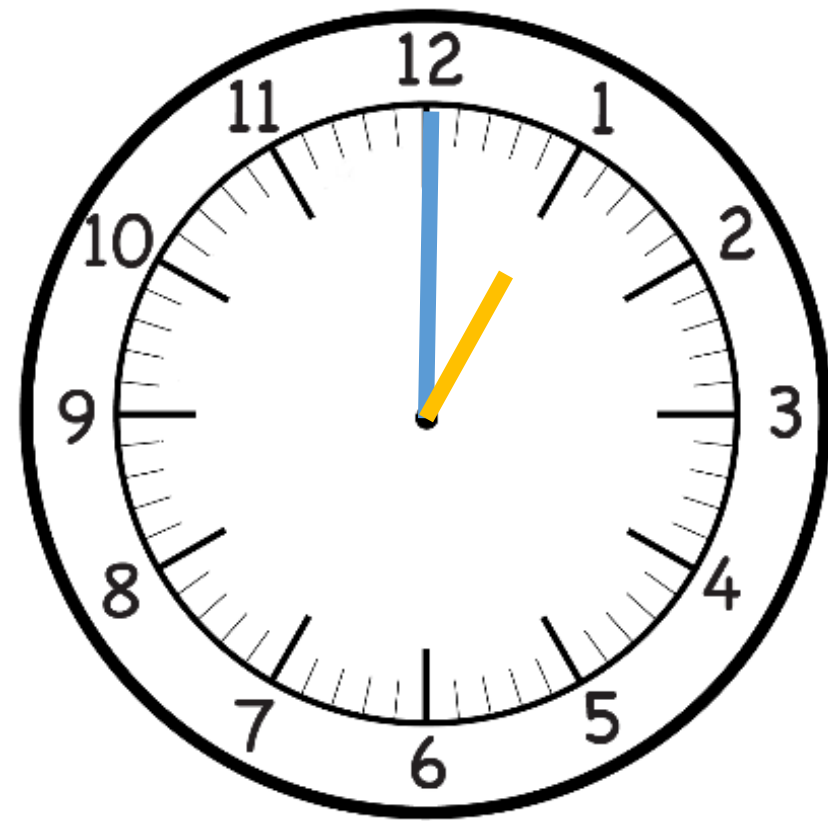


© Alessia - www.4blog.info/school

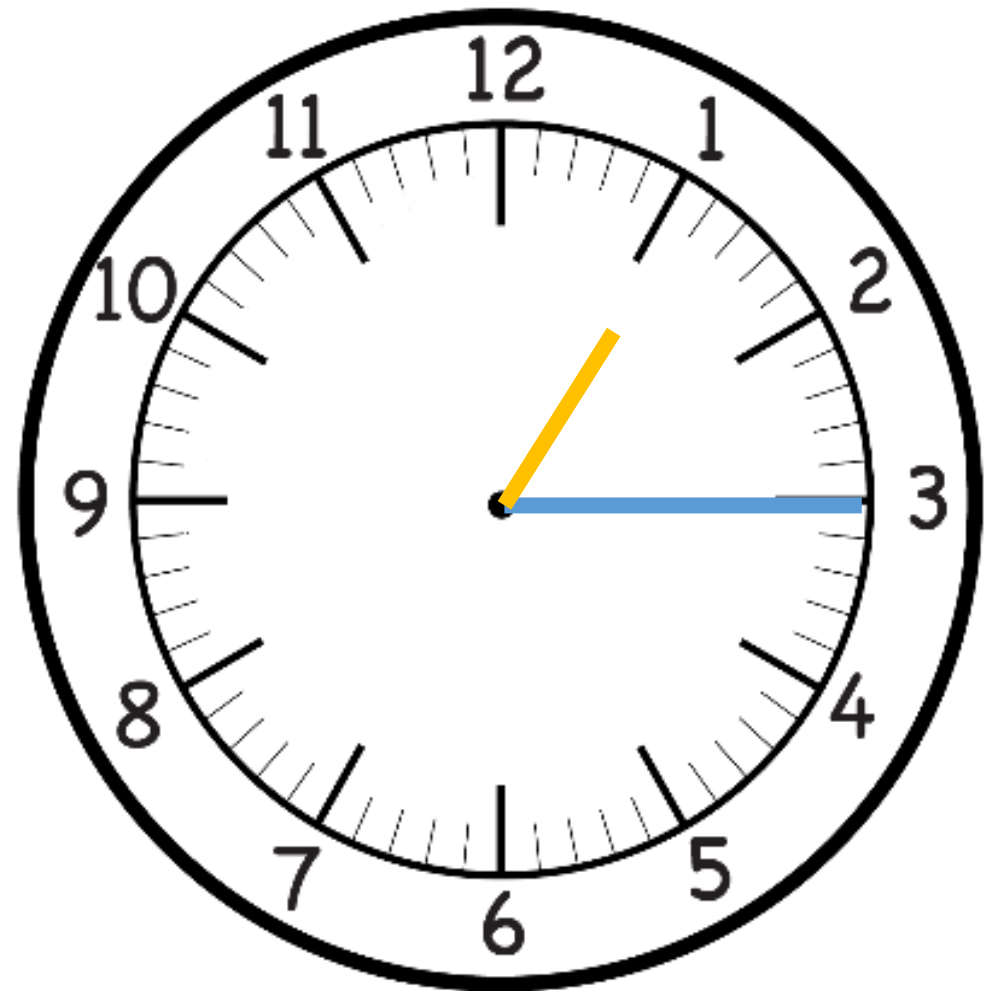
Le 13 del pomeriggio:



L'1 di notte:



Alle 13 e un quarto, quando abbiamo il pomeriggio, si ricominciano le lezioni:



Le quattro del pomeriggio sono le 16.

Alle 16 e un quarto torniamo a casa:



PRIMA DI MEZZOGIORNO

DOPO MEZZOGIORNO



1:00



13:00



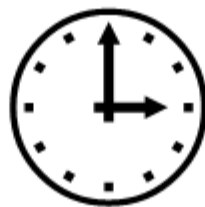
2:00



14:00



3:00



15:00



4:00



16:00



5:00



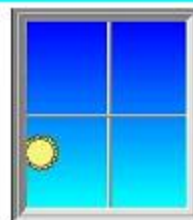
17:00



6:00



18:00



7:00



19:00



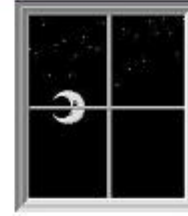
8:00



20:00



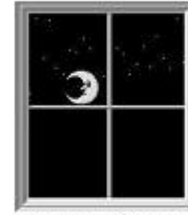
9:00



21:00



10:00



22:00



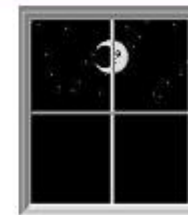
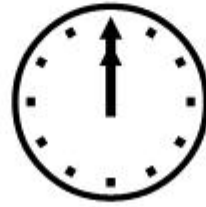
11:00



23:00











12:00



24:00

Segna la risposta giusta con una crocetta ✕ 

		1:00 <input type="checkbox"/>
		13:00 <input type="checkbox"/>
		4:00 <input type="checkbox"/>
		16:00 <input type="checkbox"/>
		12:00 <input type="checkbox"/>
		24:00 <input type="checkbox"/>
		12:00 <input type="checkbox"/>
		24:00 <input type="checkbox"/>